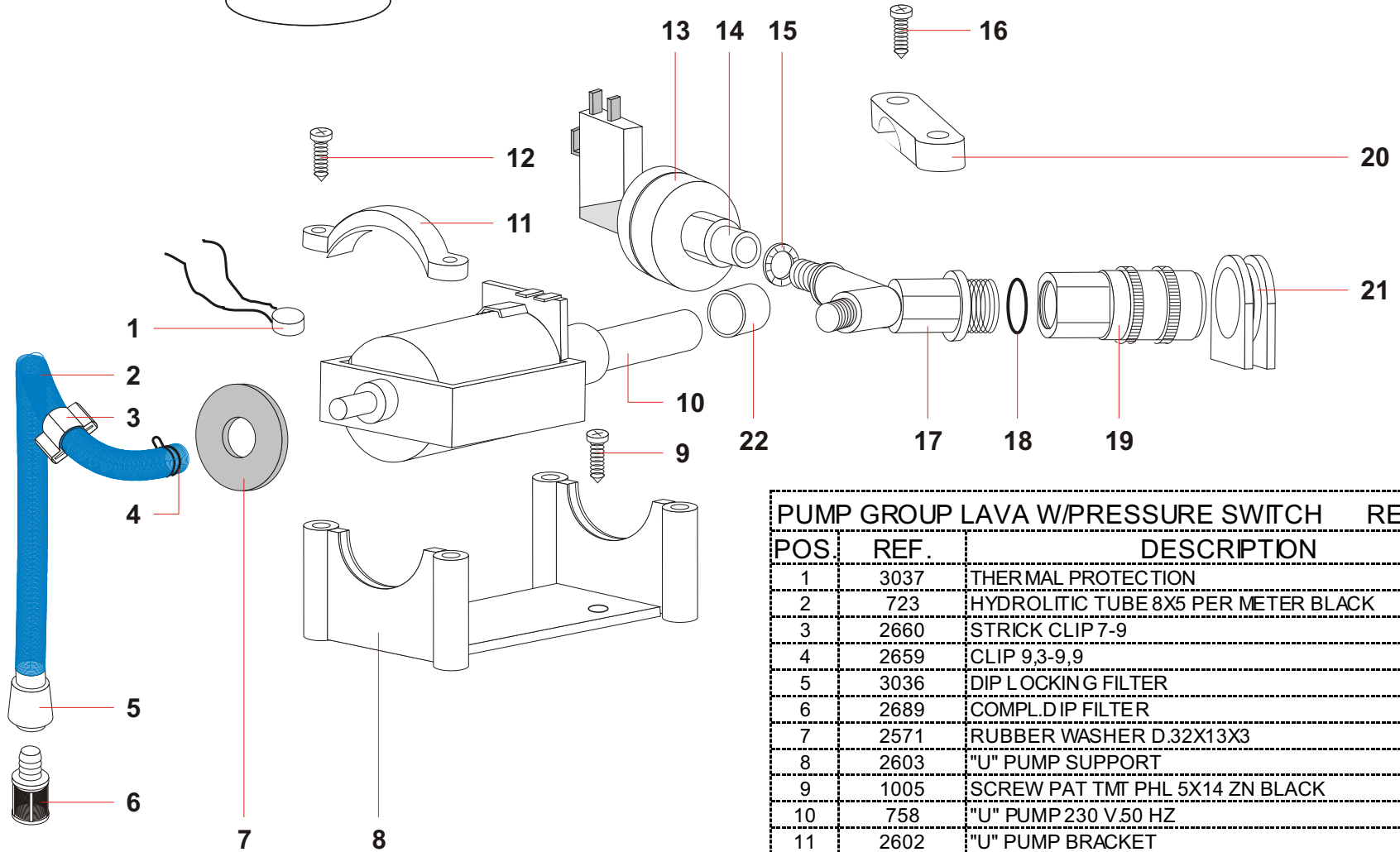
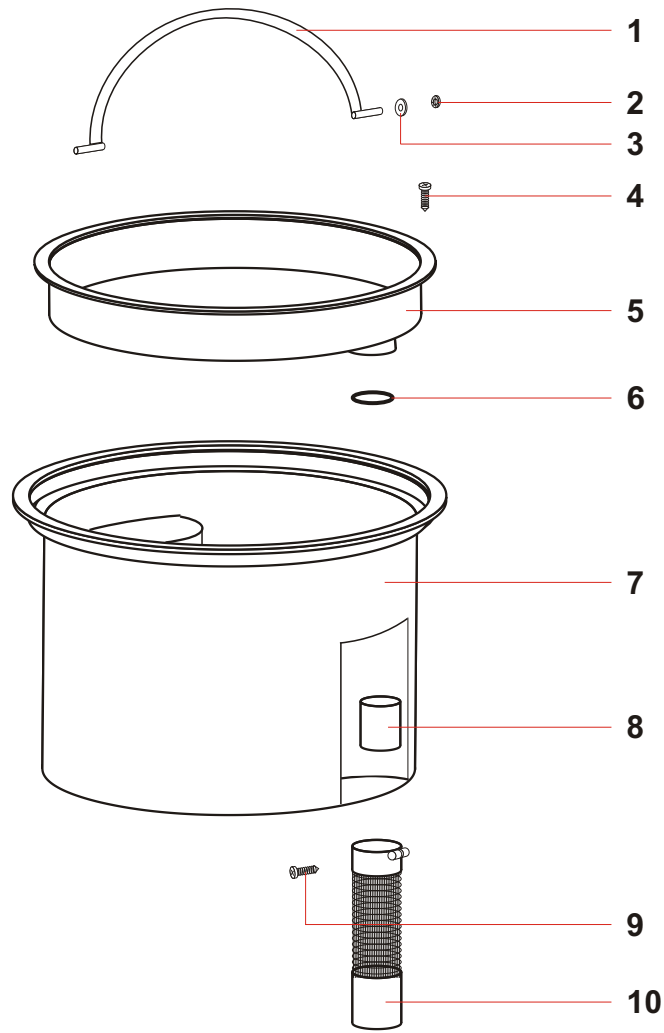


HEAD CLIP (KERR-NZ)			REF. 2691 KERRNZ
POS	REF.	DESCRIPTION	N°
1	466 AUS	ELECTRIC CORD 3X1 (AUS)	1
2	138	FAIRLEAD	1
3	139	CABLE CLAMP	1
4	1006	SCREW PFU TMT PHL 5X20 BLACK	2
5	3443	TERMINAL BOARD 300/500 EU/NEV TRIP.	1
6	2589G6	HOOK 99 GREY 6000	1
7	1026	SCREW PAT TMT PHL 5X30 BLACK	4
8	2588G6	HANDLE 99 GREY 6000	1
9	1050	SCREW PAT TMT PHL 5X35 BLACK	2
10	1050	SCREW PAT TMT PHL 5X35 BLACK	2
11	2631RN	COVER JOB/LAVA N NORMAL RED	1
12	484	ANTISPLASH RED LIGHT SWITCHER	1
13	756	ANTISPLASH GREEN LIGHT SWITCH	1
14	1006	SCREW PFU TMT PHL 5X20 BLACK	4
15	3937	FILTER MTP/65 H=15 D.95	1
16	1050	SCREW PAT TMT PHL 5X35 BLACK	6
17	2633G6	COVERING JOB/LAVA GREY 6000	1
18	3969	WASHER H8 D85X65	1
19	1050	SCREW PAT TMT PHL 5X35 BLACK	6
20	310	PLASTIC RING FOR MOTOR H=15	1
21	1006	SCREW PFU TMT PHL 5X20 BLACK	4
22	2634RN	MOTORFASTENER JOB/LAVA N.RED	1
23	3901	"L" GASKET W/O HOLES H=5,5	1
24	3891/E	MOT BD302 1000W 220-240V/50-60HZ (NZ ONLY)	1
24	3973	MOT BD302 1000W 240-250V/50-60HZ (AUS ONLY)	1
25	3901	"L" GASKET W/O HOLES H=5,5	1
26	3866	WASHER MTP 65MM 18D230X145	1
27	2636G6	BASE JOB/LAVA GREY 6000	1
28	20232	STRAIN RELIEF SET V5 UK	1
29	7877	NYLON "P" CABLE HOLDER	1
30	1302	RIVET 4.8X17	1
*	7632/PITP	ELEC TR. KIT 40CM MOTOR POKE-IN TP	1



PUMP GROUP LAVA W/PRESSURE SWITCH			REF. 6926/OTT
POS	REF.	DESCRIPTION	N°
1	3037	THERMAL PROTECTION	1
2	723	HYDROLITIC TUBE 8X5 PER METER BLACK	1
3	2660	STRICK CLIP 7-9	1
4	2659	CLIP 9,3-9,9	1
5	3036	DIP LOCKING FILTER	1
6	2689	COMPL.DIP FILTER	1
7	2571	RUBBER WASHER D.32X13X3	2
8	2603	"U" PUMP SUPPORT	1
9	1005	SCREW PAT TMT PHL 5X14 ZN BLACK	2
10	758	"U" PUMP 230 V.50 HZ	1
11	2602	"U" PUMP BRACKET	2
12	1979	SCREW PFU TMT PHL 5X25 ZN BLACK	4
13	3919	PRESSURE SWITCH GP110	1
14	689	NIPPLE 1/4" F. 1/8" F.	1
15	3722	NOTCHED WASHER M10 UNI 6798	1
16	1979	SCREW PFU TMT PHL 5X25 ZN BLACK	2
17	3096	PLAST."Y" COUPLING 2 WAYS	1
18	1610	O RING 9	1
19	3689/OTT	QUICK SOCKET 1/4" F	1
20	2604	FIXING BOLT CONN.	1
21	6082	GUIDING SLIT LAVA	1
22	6118	METAL BUSH 16X12	1



COMPL CLEAR WATER TANK LT.11			REF. 2683
POS	REF	DESCRIPTION	N°
1	2577	INOX HANDLE SMALL BUCKET	1
2	2573	ELASTIC WASHER D.6	2
3	1234	RUBBER WASHER D.18X5X1,5	2
4	2622	SCREW "TC" 4.2X19 INOX	4
5	2596	BUCKET COVER LT.11 BLACK	1
6	6601	RING OR D.25,12X1,78	1
7	2595	BIG BUCKET LT.11	1
8	2580-1NE	FLOAT NEW BLACK	1
9	6252	SCREW/AUT.TC PHL 3.9X13 INOX	2
10	2592-1	ANTIFOAMBODY MINI D.50	1

BIG/PLAST TANK S/INOX COMP.			REF. 2668/K
POS	REF.	DESCRIPTION	N°
1	2599	BIG PLAST.TANK 303/315 GR4000	1
2	1300	RIVET 5X24,5	4
3	1847/SG6	COMPLETE PLASTIC HOOK GREY6000	2
4	6258	SCREW AUT.TC PHL 4.8X32 INOX	4
5	2846	GASKET D.38	1
6	2586G6	GASKET R 205 GREY6000	1
7	2593	DEFLECTOR 99	1
8	2652 AG6	COMPLETE INLET R155 GREY6000	1
9	558	TROLLEY BOXWHEEL	6

